

# Connoisseur Catalogue

Online Edition ©2008

## Copyright Notice

Copyright protects the contents and layout of the Connoisseur Catalogue. Permission is hereby given for material in this catalogue to be used privately by philatelists in describing and writing up their collections. It is also extended to be quoted editorially in magazines and philatelic society publications, also by stamp dealers in advertisements and price lists, provided that acknowledgement of the source is given. Where catalogue numbers are quoted, they must be used in full and unadapted and the source must be acknowledged in the advertisement or list.

Publishers of books, catalogues, albums and all other publications, must obtain written consent to quotation or reproduction of parts of this work in any form or by any means, electronic, mechanical or otherwise from B.Alan (Stamps) Ltd. (*2 Pinewood Avenue, Sevenoaks, Kent, TN14 5AF, UK*) in all other instances. This copyright covers all diagrams used in this work. The copyright for stamp images, panes and parts thereof is vested in The Post Office and remains their property at all times.

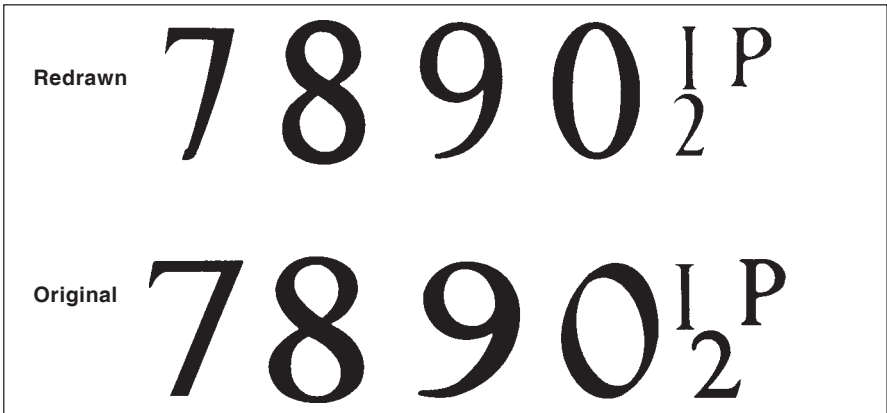
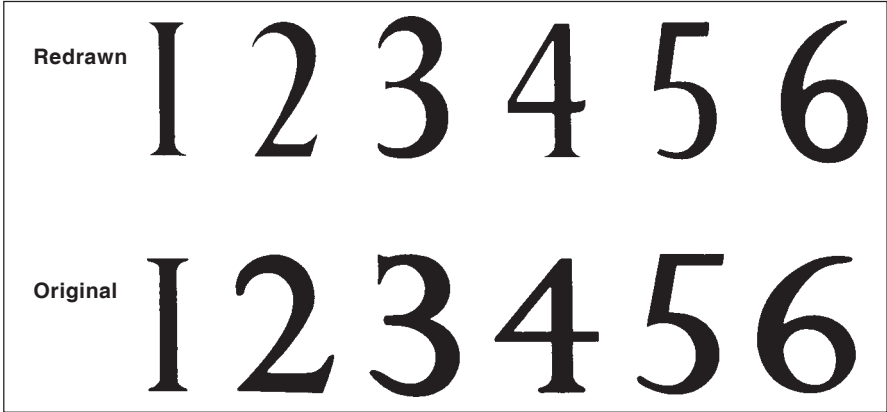
## Acknowledgments

The publishers are most grateful to Douglas G. A. Myall (2 Elizabeth Avenue, Bridport, Dorset, DT6 5BA) for his help and continued agreement of the use of his Deegam system copyright material for: (a) the Machin Head Type designations; (b) cross-references to his Type numbers in descriptions of value settings; (c) the S series for coding of short phosphor bands, the I series for inset bands and the N series for notched bands; and (d) the universal coding system for sheet and cylinder block perforation types.

We also acknowledge the use, with permission, of copyright material of the Modern British Philatelic Circle (Membership Secretary – A.J. Wilkins, 3 Buttermere Close, Brierley Hill, West Midlands, DY5 3SD) covering: (a) the DB system for numbering decimal stamp booklets with the exception of ‘window’ stamp booklets; (b) the DP & SP numbering systems for all decimal booklet panes; (c) the perforation coding system for decimal booklet panes; and (d) the Type numbering system for ‘window’ stamp booklets.

### SECTION 3

#### Decimal Stamps with Redrawn Numerals



For some time both Post Office and printers were aware that the value tablet had lost its uniformity both in design and position; whilst giving great pleasure to philatelists, enabling them to place and identify printings by value, type and position, it did not correspond to the Post Office's ideas of quality control. At a P.O. meeting early in 1982, it was felt that the previous arrangement of leaving it to the printing technicians to select the particular value tablet required, and even leaving to the same technicians the actual positioning of the value, had resulted in an unacceptable hotchpotch. Added to this were the problems that arose from the ever-increasing size of the denominations, both physical and numerical.

When inflation called for such values as the 20½p, a narrower set of numerals with less spread was required and Jeffery Matthews, the artist often used by the British Post Office, was employed to design the completely new set of denominations. Each value is designed as a whole in the sleeker and more modern style now in use: for ease of reference we illustrate the numerals separately. Matthews also positions the values on a grid based on the bottom corner of the stamp design, so that in theory different settings should no longer occur.

Redrawn numerals first appeared in the issues of 30 March 1983; phasing out the old style was progressively completed by 1988.

Along with redesigned numerals the Post Office have been systematically improving other aspects of design. In 1988 they began switching to the stronger “Jeffery Matthews” colours, for which he has designed a total of 30. In using them the P.O. have progressively phased out light and graded backgrounds, current style being light heads on dark backgrounds. First seen with the Harrison 5p of 26 July 1988, the change-over was completed with the issue of the 10p orange of 4 September 1990.

Screening dots over the value tablet reappeared in 1986 with the sheet stamps 12p FCP (CC RF120) and 34p ACP (CC RA340). From mid-1987 other values have been found with screened values and these are listed with suffix SCR.

## Harrison printings. Photo. Perf 15 x 14.

**Sources:** See Chapter 2, heading to listing.

<i>CC</i>	<i>Value</i>	<i>Phos. Bands</i>	<i>First Issued</i>	<i>Source</i>	<i>Price</i>
<b>(a) FCP/DEX</b>					
<b>All 150 phosphor screen except where stated. (S) codes indicate short bands.</b>					
<b>RF10</b>	<b>1p</b>	Crimson, 4mm phos RF10AB RF10NP	CB Additional narrow short bands at top Missing phosphor	3.9.84 50p panes DP70/A pane DP70 pane DP70	0.50 7.50 50.00
<b>RF11</b>	<b>1p</b>	Crimson, 4.5mm phos	CB	29.7.86 20.10.86	50p pane DP90 50p pane DP94
<b>RF12</b>	<b>1p</b>	Crimson RF12BB RF12NP	SBL Broad band at left Missing phosphor	20.10.86	50p pane DP93 pane DP93 pane DP93
<b>RF13</b>	<b>1p</b>	Crimson	SBR	20.10.86	50p ERROR pane DP93A
<b>RF35</b>	<b>3½p</b>	Purple-brown RF35NP	CB Missing phosphor	5.4.83	50p panes DP60/M pane DP60
<b>RF36</b>	<b>3½p</b>	Pale purple-brown, weak background	CB	4.83	50p panes DP60
<b>RF40</b>	<b>4p</b>	Pale greenish blue RF40NP	CB Missing phosphor	3.9.84	50p panes DP70/A pane DP70
<b>RF41</b>	<b>4p</b>	Greenish blue RF41BB RF41FB RF41NP	SBL One broad band at left Bands front & back Missing phosphor	8.1.85	Times pane DP79 pane DP79 pane DP79 pane DP79

<i>CC</i>	<i>Value</i>		<i>Phos. Bands</i>	<i>First Issued</i>	<i>Source</i>	<i>Price</i>
<b>RF42</b>	<b>4p</b>	Greenish blue RF42FB	SBR Bands front & back	8.1.85	Times pane DP79 pane DP79	1.50 375.00
<b>RF43</b>	<b>4p</b>	Pale milky blue	CB	23.7.85	50p pane DP70	8.50
<b>RF50</b>	<b>5p</b>	Claret	CB	20.10.86	50p pane DP94	1.75
<b>RF100</b>	<b>10p</b>	Light orange RF100FB RF100NP	2B Bands front & back Missing phosphor	4.9.84	Heritage pane DP74 pane DP74 pane DP74	10.00 850.00 £1500
<b>RF101</b>	<b>10p</b>	Light orange, translucent paper	2B	4.9.84	Heritage Pane DP74	30.00
<b>RF120</b>	<b>12p</b>	Emerald, 4mm phos  RF120IMP RF120NP	CB  Imperforate Missing phosphor	29.10.85 12.11.85 14.1.86 23.9.86	cyls 9, 10, 11, 12, 13 vert coil C28A £1.20 panes DP84, 84A/C horiz coil C28B cyl – (hor pair) cyl 9; DP84	0.50  £1000 7.00
<b>RF120SCR</b>	<b>12p</b>	Emerald, screened value	CB	2.86	cyl 11	3.00
<b>RF120A</b>	<b>12p</b>	Emerald, 4.5mm phos  RF120A/BR RF120A/NP	CB  One band right (displaced) Missing phosphor	18.3.86 29.7.86	Brit Rail pane DP87 50p pane DP90 pane DP87 pane DP87	2.00  40.00 25.00
<b>RF120B</b>	<b>12p</b>	Emerald, flooded value 4mm phos	CB	11.85	cyls 9	10.00
<b>RF121</b>	<b>12p</b>	Emerald, star underprint Type 2M RF121BR	CB One band right (displaced)	29.10.85	cyls 9, 10 cyl 9	0.50 5.50
<b>RF121SCR</b>	<b>12p</b>	Emerald, star underprint Type 2M, screened value	CB	12.85	cyl 10	5.00
<b>RF122</b>	<b>12p</b>	Emerald  RF122BB RF122FB RF122NP	SBL  One broad band at left Bands front & back Missing phosphor	14.1.86 18.3.86	£1.50 panes DP85/A Brit Rail pane DP88 pane DP88 pane DP88 pane DP88	0.75  175.00 350.00 65.00
<b>RF123</b>	<b>12p</b>	Emerald  RF123FB	SBR  Bands front & back	14.1.86 18.3.86	£1.50 panes DP85/A Brit Rail pane DP88 pane DP88	0.75  350.00
<b>RF130</b>	<b>13p</b>	Chestnut  RF130AOP RF130BR RF130HB RF130IMP RF130NP	CB  Phosphor wash One band right (displaced) Additional horizontal phosphor band Imperforate Missing phosphor	28.8.84 3.9.84 3.9.84 3.9.84 20.10.86 21.10.86	cyls 7, 14 vert coil C30 50p panes DP70/A £1.30 panes DP68/A 50p pane DP94 horiz coil C30A pane DP68 horiz coil C30A pane DP68, sheets cyl – (horiz pair) panes DP68/A, 70	0.60  12.00 5.00 8.50 950.00 5.00

**3 : Redrawn Numerals FCP/DEX**

<i>CC</i>	<i>Value</i>		<i>Phos. Bands</i>	<i>First Issued</i>	<i>Source</i>	<i>Price</i>	
<b>RF131</b>	<b>13p</b>	Chestnut	CB5	8.1.85	Times pane DP78	0.60	
		RF131FB	Bands front & back		pane DP78	90.00	
		RF131NP	Missing phosphor		pane DP78	70.00	
<b>RF131A</b>	<b>13p</b>	Chestnut, star underprint Type 2	CB	2.12.86	£1.20 Xmas panes		
		RF131A/NP	Missing phosphor		DP68D/E pane DP68D	0.60 £1250	
<b>RF132</b>	<b>13p</b>	Chestnut	SBL	3.9.84	£1.54 panes DP71/A	0.65	
				4.9.84	Heritage panes DP73, 74, 75		
				8.1.85	Times pane DP79		
				20.10.86	50p ERROR pane DP93A		
				20.10.86	£1 pane DP95		
		RF132BB	One broad band at centre (L.£95, R.£125)		panes DP75, 79	85.00	
		RF132FB RF132NP	Bands front & back Missing phosphor		panes DP74, 75, 79 panes DP73,74,75,79	125.00 40.00	
<b>RF132A</b>	<b>13p</b>	Chestnut, translucent paper	SBL	4.9.84	Heritage panes DP73, 74	27.50	
<b>RF133</b>	<b>13p</b>	Chestnut	SBR	3.9.84	£1.54 panes DP71/A	0.65	
				4.9.84	Heritage panes DP73, 75		
				8.1.85	Times pane DP79		
				20.10.86	50p pane DP93		
		RF133FB RF133NP	Bands front & back Missing phosphor		pane DP73, 75, 79 pane DP93	125.00 35.00	
<b>RF133A</b>	<b>13p</b>	Chestnut, translucent paper	SBR	4.9.84	Heritage pane DP73	40.00	
<b>RF134</b>	<b>13p</b>	Chestnut			£1.54 ERROR panes DP71D/E:		
			2B (S14)	3.9.84	panes DP71D/E	6.00	
			2B (S15)	3.9.84	panes DP71D/E	6.00	
<b>RF170</b>	<b>17p</b>	Grey-blue	2B	3.9.84	£1.54 panes DP71A, 71D/E:	0.70	
				4.9.84	Heritage pane DP74		
					8.1.85	Times pane DP79	
					14.1.86	£1.50 panes DP85/A	
					18.3.86	Brit Rail pane DP88	
				2B (S10)	3.9.84	£1.54 panes DP71A	3.00
					14.1.86	£1.50 panes DP85/A	
				2B (S11)	3.9.84	£1.54 panes DP71A	3.00
					14.1.86	£1.50 panes DP85/A	
				2B (S12)	4.9.84	Heritage pane DP74	2.50
					14.1.86	£1.50 panes DP85/A	
				2B (S13)	4.9.84	Heritage pane DP74	2.50
					14.1.86	£1.50 panes DP85/A	
				2B (S14)	3.9.84	£1.54 panes DP71/A	2.50
					14.1.86	£1.50 panes DP85/A	
				2B (S15)	3.9.84	£1.54 panes DP71/A	2.50
		14.1.86	£1.50 panes DP85/A				
	RF170BB	One broad band at left		panes DP79, 88	275.00		
	RF170FB	Bands front & back		panes DP74, 79, 88	175.00		
	RF170NP	Missing phosphor		panes DP74, 79, 88	275.00		

<i>CC</i>	<i>Value</i>	<i>Phos. Bands</i>	<i>First Issued</i>	<i>Source</i>	<i>Price</i>	
<b>RF170A</b>	<b>17p</b>	Grey-blue, bands 250 scr	2B	12.8.86	50p pane DP82A	1.00
			2B (S16)	12.8.86	50p pane DP82A	4.50
			2B (I1)	12.8.86	50p pane DP82A	7.50
<b>RF170B</b>	<b>13p</b>	Grey-blue, translucent paper	2B	4.9.84	Heritage pane DP74	10.00
			2B (S12)	4.9.84	Heritage pane DP74	40.00
			2B (S13)	4.9.84	Heritage pane DP74	40.00
<b>RF171</b>	<b>17p</b>	Grey-blue	SBL	3.9.84	£1.54 ERROR panes DP71D/E	11.00
<b>RF172</b>	<b>17p</b>	Grey-blue	SBR	3.9.84	£1.54 ERROR panes DP71D/E	11.00
<b>RF173</b>	<b>17p</b>	Grey-blue, star underprint Type 2M	2B	4.11.85	50p pane DP82	0.70
			2B (S16)	4.11.85	50p pane DP82	7.50
			2B (N1)	4.11.85	50p pane DP82	6.00
			2B (I1)	4.11.85	50p pane DP82	6.00
			2B (I2)	4.11.85	50p pane DP82	17.50
			RF173BU Phos displaced up (S17)		pane DP82	10.00
			RF173MLBa Left band omitted		pane DP82	90.00
			RF173MLBb Short left band omitted		pane DP82	100.00
			RF173MRBa Right band omitted		pane DP82	90.00
			RF173MRBb Short right band omitted		pane DP82	100.00
	RF173NP Missing phosphor		pane DP82	10.00		
<b>RF180</b>	<b>18p</b>	Grey-green	2B	20.10.86	£1 pane DP95	2.00
			2B (S10)	20.10.86	50p panes DP93/A	8.00
			2B (S12)	20.10.86	50p panes DP93/A,	
					£1 pane DP95	4.50
			2B (N1)	20.10.86	£1 pane DP95	15.00
			RF180BB Broad band at left		pane DP93	250.00
	RF180NP Missing phosphor		pane DP93	25.00		
<b>RF180SCR</b>	<b>18p</b>	Grey-green, screened value	2B	20.10.86	£1 pane DP95	15.00
			2B (S10)	20.10.86	50p panes DP93/A	30.00
			2B (S12)	20.10.86	panes DP93/A, 95	30.00
			2B (N1)	20.10.86	pane DP95	35.00
<b>RF181</b>	<b>18p</b>	Grey-green, inset band	2B (I1)	20.10.86	£1 pane DP95	5.00
<b>RF181SCR</b>	<b>18p</b>	Grey-green, screened value, inset band	2B (I1)	20.10.86	£1 pane DP95	35.00
<b>RF310</b>	<b>31p</b>	Purple	2B	18.3.86	Brit Rail pane DP88	6.25
		RF310BB	One broad band at left		pane DP88	£1000
		RF310FB	Bands front & back		pane DP88	800.00
		RF310NP	Missing phosphor		pane DP88	850.00
<b>RF340</b>	<b>34p</b>	Olive-sepia	2B	8.1.85	Times pane DP79	5.50
		RF340BB	One broad band at left		pane DP79	£1000
		RF340FB	Bands front & back		pane DP79	£1000
		RF340NP	Missing phosphor		pane DP79	950.00

### 3 : Redrawn Numerals FCP/DEX A-phosphor

<i>CC</i>	<i>Value</i>	<i>Phos. Bands</i>	<i>First Issued</i>	<i>Source</i>	<i>Price</i>	
<b>(b) FCP/DEX A-phosphor</b>						
<b>RFA10</b>	<b>1p</b>	Crimson, 4,5mm phosphor	CB	27.1.87	50p pane DP94A	2.50
<b>RFA10SEL</b>	<b>1p</b>	Crimson s/e left, 4,5mm phosphor RFA10SEL/NP	CB Missing phosphor	29.9.87	50p pane DP94A pane DP94A	1.00 90.00
<b>RFA11SEL</b>	<b>1p</b>	Crimson s/e left, 4mm phosphor	CB	20.10.87	50p pane DP94D	1.25
<b>RFA12</b>	<b>1p</b>	Crimson RFA12BB RFA12NP	SBL Broad band left Missing phosphor	27.1.87	50p pane DP93D pane DP93D pane DP93D	3.00 — 15.00
<b>RFA13</b>	<b>1p</b>	Crimson	SBR	27.1.87	50p ERROR pane DP93E	35.00
<b>RFA50</b>	<b>5p</b>	Claret,4.5mm phosphor	CB	27.1.87	50p pane DP94A	1.75
<b>RFA50SEL</b>	<b>5p</b>	Claret s/e left, 4,5mm phosphor RFA50SEL/NP	CB Missing phosphor	29.9.87	50p pane DP94A pane DP94A	0.80 75.00
<b>RFA51SEL</b>	<b>5p</b>	Claret s/e left, 4mm phosphor	CB	20.10.87	50p pane DP94D	1.25
<b>RFA120</b>	<b>12p</b>	Emerald RFA120AOP	CB Phosphor wash	6.86*	cyl 13 cyl 13	0.60 12.50
<b>RFA130</b>	<b>13p</b>	Chestnut, 4.5mm phosphor	CB	27.1.87	50p pane DP94A	1.25
<b>RFA130SCR</b>	<b>13p</b>	Chestnut 4.5mm phos, screened value	CB	27.1.87	50p pane DP94A	25.00
<b>RFA130SER</b>	<b>13p</b>	Chestnut s/e right, 4,5 mm phosphor RFA130SER/NP	CB Missing phosphor	29.9.87	50p pane DP94A pane DP94A	0.60 25.00
<b>RFA131</b>	<b>13p</b>	Chestnut, 4mm phosphor	CB	27.1.87 27.1.87 3.3.87 4.8.87 4.8.87	cyls 7, 14, 15 £1.30 panes DP68F/G P & O panes DP97, 99 52p Window pane DP100 £1.30 Window pane DP101	0.45
		RFA131AOP RFA131IMP RFA131NP	Phosphor wash Imperforate Missing phosphor		panes DP68F/G cyl – (horiz pair) cyl 15; pane DP68F	11.50 750.00 6.00
<b>RFA131SCR</b>	<b>13p</b>	Chestnut 4mm phos, screened value RFA131SCR/NP	CB Missing phosphor	14.4.87	£1.30 panes DP68F/G panes DP68F/G	1.75 15.00
<b>RFA131SER</b>	<b>13p</b>	Chestnut s/e right, 4mm phosphor	CB	20.10.87	50p pane DP94D	0.75

\*"First day" covers exist dated 11.7.86.

### 3 : Redrawn Numerals FCP/DEX A-phosphor

<i>CC</i>	<i>Value</i>		<i>Phos. Bands</i>	<i>First Issued</i>	<i>Source</i>	<i>Price</i>
<b>RFA132</b>	<b>13p</b>	Chestnut	SBL	27.1.87	£1 pane DP95A	1.10
				27.1.87	50p ERROR pane DP93E	
<b>RFA132SEL</b>	<b>13p</b>	Chestnut s/e left RFA132SEL/2B	SBL Phos displaced left giving 2B	29.9.87	£1 pane DP95A	2.50
					pane DP95A	20.00
<b>RFA133</b>	<b>13p</b>	Chestnut	SBR	27.1.87	50p pane DP93D	0.60
				3.3.87	P & O pane DP98 pane DP93D	
<b>RFA140</b>	<b>14p</b>	Deep blue	CB	23.8.88	cyls 10	0.50
				23.8.88	56p Window pane DP109	
				23.8.88	£1.40 Window pane DP110	
				5.9.88	£1.40 panes DP114/A	
				5.9.88	horiz coil C31A	
				5.9.88	vert coil C31B	
		RFA140AOPa	All-over phosphor		cyl 10	12.50
		RFA140AOPb	All-over phos ('PCP')		pane DP114	2.50
		RFA140NP	Missing phosphor		pane DP109, 114	30.00
<b>RFA140SCR</b>	<b>14p</b>	Deep blue, screened value RFA140SCR/IMP	CB Imperforate	4.89	cyl 11	1.25
					cyl 11 No Dot (hor or vert pair)	350.00
<b>RFA140SET</b>	<b>14p</b>	Deep blue, s/e top, comb perf (Chambon)	CB	11.10.88	56p Window pane DP109A	0.75
				11.10.88	£1.40 Window pane DP110A cyl B27 & B30	
				24.1.89	56p Window pane DP109B	
					pane DP109B	9.00
<b>RFA140SEB</b>	<b>14p</b>	Deep blue, s/e bottom, comb perf (Chambon)	CB	11.10.88	56p Window pane DP109A	0.75
				11.10.88	£1.40 Window pane DP110A cyl B30	
				24.1.89	56p Window pane DP109B	
					panes DP109B, 110A	9.00
<b>RFA140SRT</b>	<b>14p</b>	Deep blue, s/e right & top	CB	24.1.89	56p Window pane DP109B	7.50
					pane DP109B	9.00
<b>RFA140SRB</b>	<b>14p</b>	Deep blue, s/e right & bottom	CB	24.1.89	56p Window pane DP109B	7.50
					pane DP109B	9.00
<b>RFA141SEL</b>	<b>14p</b>	Deep blue, s/e left RFA141SEL/AOP RFA141SEL/NP	SBR Phosphor wash Missing phosphor	5.9.88	£1 pane DP117	0.90
					pane DP117	100.00
					pane DP117	300.00

### 3 : Redrawn Numerals FCP/DEX A-phosphor

<i>CC</i>	<i>Value</i>	<i>Phos. Bands</i>	<i>First Issued</i>	<i>Source</i>	<i>Price</i>
<b>RFA142</b>	<b>14p</b> Deep blue	SBR (S7)	5.9.88	50p pane DP116 cyl B1 (APS)	2.00
			8.8.89	50p pane DP116 cyl B2 (comb) pane DP116	5.00
		SBR (S8)		pane DP116	2.00
		SBR Missing phosphor		pane DP116	5.00
<b>RFA142NP</b>					
<b>RFA143SET</b>	<b>14p</b> Deep blue, s/e top rotary perfs (Chambon)	CB	11.10.88	56p Window pane DP109A	12.50
<b>RFA143SET/SCR</b>	<b>14p</b> Deep blue, screened value, s/e top, rotary perfs (Chambon)	CB	11.10.88	£1.40 Window pane DP110A cyl B29	1.75
				RFA143SET/SCR/AOP All-over phos (phos contaminated)	pane DP110A
		RFA143SET/SCR/NP Missing phosphor	pane DP110A	25.00	
<b>RFA143SEB</b>	<b>14p</b> Deep blue, s/e bottom rotary perfs (Chambon)	CB	11.10.88	56p Window pane DP109A	12.50
<b>RFA143SEB/SCR</b>	<b>14p</b> Deep blue, screened value, s/e bottom, rotary perfs (Chambon)	CB	11.10.88	£1.40 Window pane DP110A cyl B29	1.75
				RFA143SEB/SCR/AOP All-over phos (phos contaminated)	pane DP110A
		RFA143SEB/SCR/NP Missing phosphor	pane DP110A	25.00	
<b>RFA144SET</b>	<b>14p</b> Deep blue, s/e top, rotary perfs, value set nearer left (Jumelle)	CB	10.7.89	£1.40 Window pane DP110A cyl B31 (APS)	4.00
<b>RFA144SEB</b>	<b>14p</b> Deep blue, s/e bottom, rotary perfs, value set, nearer left (Jumelle)	CB	10.7.89	£1.40 Window pane DP110A cyl B31 (APS)	4.00
<b>RFA150</b>	<b>15p</b> Bright blue	CB	26.9.89	cyl 3	0.50
			16.10.89	vert coil C31D	
		RFA150IMP Imperforate		cyl 3 (hor or vert pair)	500.00
RFA150NP	Missing phosphor			cyl 3	12.00
<b>RFA151</b>	<b>15p</b> Bright blue	SBL	2.10.89	50p pane DP132	1.50
		RFA151NP Missing phosphor		pane DP132	200.00
<b>RFA152</b>	<b>15p</b> Bright blue, inset band	SBL (I1)	2.10.89	50p pane DP132	1.75
<b>RFA153</b>	<b>15p</b> Bright blue, notched band	SBL (N1)	2.10.89	50p pane DP132	15.00
<b>RFA154</b>	<b>15p</b> Bright blue	SBR	20.3.90	£5 London Life pane DP147	1.50
<b>RFA154A</b>	<b>15p</b> Bright blue, thin value	CB	16.10.89	horiz coil C31C	1.75
<b>RFA170</b>	<b>17p</b> Deep blue	CB	4.9.90	cyl 17	1.75
			17.9.90	vert coil C34A	
RFA170IMP	Imperforate			cyl 17 (hor or vert pair)	950.00
<b>RFA170SCR</b>	<b>17p</b> Deep blue, scr value	CB	4.9.90	cyls 17, 19	0.70

### 3 : Redrawn Numerals FCP/DEX A-phosphor

<i>CC</i>	<i>Value</i>		<i>Phos. Bands</i>	<i>First Issued</i>	<i>Source</i>	<i>Price</i>
<b>RFA171</b>	<b>17p</b>	Deep blue, inset band RFA171NP	SBL (I1)	4.9.90	50p pane DP162	0.80
			Missing phosphor		pane DP162	8.00
<b>RFA172</b>	<b>17p</b>	Deep blue, notched band RFA172BU	SBL (N1)	4.9.90	50p pane DP162	2.50
			Phos displaced up (S5)		pane DP162	2.50
<b>RFA173</b>	<b>17p</b>	Deep blue RFA173BU	SBR (S7)	4.9.90	50p pane DP162	1.20
			Phos displaced up (S8)		pane DP162	5.00
<b>RFA173SEL 17p</b>		Deep blue, s/e left RFA173SEL/AOP RFA173SEL/NP	SBR	4.9.90	£1 pane DP163/A	0.90
			SBR (S7)	4.9.90	pane DP163	1.10
			Phosphor wash		pane DP163	10.00
			Missing phosphor		pane DP163	20.00
<b>RFA180</b>	<b>18p</b>	Grey-green       RFA180BB RFA180NP	2B	27.1.87	£1 pane DP95A	1.25
				3.3.87	P & O pane DP98	
			2B (S10)	27.1.87	50p panes DP93D and ERROR DP93E	1.25
			2B (S12)	27.1.87	50p panes DP93D and ERROR DP93E	1.25
				27.1.87	£1 pane DP95A	
			2B (I2)	3.3.87	P & O Pane DP98	7.50
			2B (N1)	27.1.87	£1 pane DP95A	15.00
			One broad band at left		pane DP93D	250.00
			Missing phosphor		pane DP93D	25.00
			<b>RFA180SCR</b>	<b>18p</b>	Grey-green, screened value	2B
2B (S10)	27.1.87	50p pane DP93D				15.00
2B (S12)	27.1.87	50p pane DP93D				15.00
	27.1.87	£1 pane DP95A				
2B (N1)	27.1.87	£1 pane DP95A				15.00
<b>RFA180SEL</b>	<b>18p</b>	Grey-green, s/e left	2B	29.9.87	£1 pane DP95A	1.75
			2B (S12)	29.9.87	£1 pane DP95A	2.00
<b>RFA180SEL/SCR</b>	<b>18p</b>	Grey-green, screened value, s/e left	2B	29.9.87	£1 pane DP95A	30.00
			2B (S12)	29.9.87	£1 pane DP95A	30.00
<b>RFA180SER</b>	<b>18p</b>	Grey-green, s/e right	2B	29.9.87	£1 pane DP95A	1.25
			2B (N1)	29.9.87	£1 pane DP95A	2.00
<b>RFA180SER/SCR</b>	<b>18p</b>	Grey-green, screened value, s/e right	2B	29.9.87	£1 pane DP95A	30.00
<b>RFA181</b>	<b>18p</b>	Grey-green, inset band	2B (I1)	27.1.87	£1 pane DP95A	3.00
<b>RFA181SCR</b>	<b>18p</b>	Grey-green, screened value, inset band	2B (I1)	27.1.87	£1 pane DP95A	27.50
<b>RFA181SER</b>	<b>18p</b>	Grey-green, s/e right & inset band	2B (I1)	29.9.87	£1 pane DP95A	1.50
<b>RFA181SER/SCR</b>	<b>18p</b>	Grey-green, screened value, s/e right & inset band	2B (I1)	29.9.87	£1 pane DP95A	30.00

### 3 : Redrawn Numerals FCP/DEX A-phosphor

<i>CC</i>	<i>Value</i>		<i>Phos Bands</i>	<i>First Issued</i>	<i>Source</i>	<i>Price</i>
<b>RFA182</b>	<b>18p</b>	Bright green, band offset left	CB	10.9.91	cyl 5, 7, 11, 12 vert coil C36A	0.50
		RFA182IMP	Imperforate	16.9.91		
		RFA182NP	Missing phosphor		cyl 12 (hor or vert pair) coil C36A	375.00 13.50
<b>RFA182SCR</b>	<b>18p</b>	Bright green, screened value, band offset left	CB	21.1.91	cyl 11, 12 (part)	1.50
<b>RFA183</b>	<b>18p</b>	Deep bright green, band offset left	CB	10.9.91	cyl 4, 5	2.50
<b>RFA190SEL</b>	<b>19p</b>	Orange-red, s/e left	2B	5.9.88	£1 pane DP117	4.50
			2B (S10)	5.9.88	£1 pane DP117	4.50
		RFA190SEL/AOP	Phosphor wash		pane DP117	125.00
		RFA190SEL/NP	Missing phosphor		pane DP117	700.00
<b>RFA191</b>	<b>19p</b>	Orange-red, inset bands	2B (I3)	5.9.88	50p pane DP116 cyl B1 (APS)	1.25
				8.8.89	50p pane DP116 cyl B2 (comb)	
		RFA191NP	Missing phosphor		pane DP116	4.00
<b>RFA192</b>	<b>19p</b>	Orange-red, inset rt band; left band notched	2B (I2, N1)	5.9.88	50p pane DP116 cyl B1 (APS)	1.50
					50p pane DP116 cyl B2 (comb)	
		2B (I2)		pane DP116	4.50	
		2B (S17) (I2)		pane DP116	7.50	
<b>RFA192SER</b>	<b>19p</b>	Orange-red, s/e right & inset band	2B (I2)	5.9.88	£1 pane DP117	1.25
			RFA192SER/AOP	Phosphor wash		pane DP117
		RFA192SER/NP	Missing phosphor		pane DP117	300.00
<b>RFA193SER</b>	<b>19p</b>	Orange-red, s/e right	2B	5.9.88	£1 pane DP117	1.75
			2B (N2)	5.9.88	£1 pane DP117	15.00
<b>RFA200</b>	<b>20p</b>	Black, 4.5mm right phos band*	2B	20.3.90	£5 London Life pane DP147	2.75
			2B (I1)	2.10.89	50p pane DP132	1.75
			2B (S16)(I1)	2.10.89	50p pane DP132	20.00
		RFA200NP	Missing phosphor		pane DP132	425.00
<b>RFA201</b>	<b>20p</b>	Black, 5.5mm right phos band*	2B	20.3.90	£5 London Life pane DP147	5.00
<b>RFA220SER</b>	<b>22p</b>	Orange-red, s/e right, right band inset and 4mm	2B (I2)	4.9.90	£1 pane DP163	1.75
			2B (I2, N1)	4.9.90	£1 pane DP163	10.00
		RFA220SER/NP	Missing phosphor		pane DP163	11.00
<b>RFA221SER</b>	<b>22p</b>	Orange-red, s/e right, two inset bands, 4mm at right	2B (I3)	4.9.90	£1 pane DP163	3.50
			2B (S16)(I3)	4.9.90	£1 pane DP163	3.00
<b>RFA222SER</b>	<b>22p</b>	Orange-red, s/e right, right band inset and 5mm	2B (I2)	1.91	£1 pane DP163A	3.00
			2B (I2, N1)	1.91	£1 pane DP163A	10.00

<i>CC</i>	<i>Value</i>	<i>Phos Bands</i>	<i>First Issued</i>	<i>Source</i>	<i>Price</i>
<b>RFA223SER 22p</b>	Orange-red, s/e right, two inset bands, 5mm at right	2B (I3)	1.91	£1 pane DP163A	4.00
		2B (S16)(I3)	1.91	£1 pane DP163A	4.00
<b>RFA500</b>	<b>50p</b>	Bistre	20.3.90	£5 London Life pane DP147	3.50

*\*There were two phosphor cylinders used for DP147, one with a 4.5mm phosphor band at the right edge of the pane and one with 5.5mm band. They are most easily distinguished by the gap between the bands – 11mm for RFA200 and 10mm for RFA201.*

<i>CC</i>	<i>Value</i>		<i>First Issued</i>	<i>Source</i>	<i>Price</i>
<b>(c) PCP1/DEX</b>					
<b>RP35</b>	<b>3½p</b>	Purple-brown	30.3.83	cyl 17	0.50
<b>RP70</b>	<b>7p</b>	Brick-red	29.10.85	cyls 25, 26	1.70
<b>RP71</b>	<b>7p</b>	Brick-red, translucent paper	29.10.85	cyl 25	5.00
<b>RP170</b>	<b>17p</b>	Grey-blue	30.3.83	cyl 7	0.75
			3.9.84	vert coil C34	
			3.9.84	£1.70 panes DP69/A	
			29.7.86	£1 pane DP91	
<b>RP171</b>	<b>17p</b>	Grey-blue, D underprint	5.3.85	£1.55 panes DP69 D/ E	0.90
<b>RP172</b>	<b>17p</b>	Grey-blue 2B, error of paper 2B (S16)	¶10.86	50p pane DP82D	60.00
			¶10.86	pane DP82D	120.00
<b>RP180</b>	<b>18p</b>	Grey-green, PCP1	20.10.86	£1.80 panes DP92/A	0.80
			20.10.86	vert coil C35	
<b>RP181</b>	<b>18p</b>	Grey-green, PCP2	20.10.86	£1.80 panes DP92/ A	3.00
<b>RP205</b>	<b>20½p</b>	Ultramarine RP205IMP	30.3.83	cyl 1	1.50
		Imperforate		cyl 1 (hor or vert pr)	£1100
<b>RP230</b>	<b>23p</b>	Brown-red RP230IMP	30.3.83	cyl 1	1.30
		Imperforate		cyl 1 (hor or vert pr)	£1150
<b>RP280</b>	<b>28p</b>	Deep violet RP280IMP	30.3.83	cyl 1	1.00
		Imperforate		cyl 1 (hor or vert pr)	£1250
<b>RP310</b>	<b>31p</b>	Purple RP310IMP	30.3.83	cyl 2	1.25
		Imperforate		cyl 2 (hor or vert pair)	£1000
<b>RP340</b>	<b>34p</b>	Olive-sepia	28.8.84	cyl 1	1.15

<i>CC</i>	<i>Value</i>		<i>First Issued</i>	<i>Source</i>	<i>Price</i>
<b>(d) ACP/DEX</b>					
<b>All are Bright, except for those marked as ACPD for Dull.</b>					
RA10	1p	Crimson	26.7.88 10.9.91	vert coil C2B 50p pane DP173/B	0.40
RA20	2p	Deep green RA20IMP	26.7.88	cyl 16 cyl 16 (horiz pair)	0.25 £1750
		Imperforate			
RA20SCR	2p	Deep Green, screened value	26.7.88	cyl 16 (part)	0.80
RA20SEL	2p	Deep green, s/e left	10.9.91	£1 pane DP174	0.60
RA20SER	2p	Deep green, s/e right	10.9.91	£1 pane DP174	0.60
RA21	2p	Green	5.9.88	RD 14p coil CS15	2.50
RA30	3p	Bright pink	21.1.92	cyl 46	0.40
RA30SCR	3p	Bright pink, screened value	10.10.89	RD 15p coil CS16	1.00
RA31SCR	3p	Bright pink, screened value, thinner paper	?11.90	RD 15p coil CS17	4.00
RA35	3½p	Purple-brown	14.9.83	Royal Mint pane DP65	1.10
RA40	4p	New blue	1.10.91	RD 18p coil CS19	0.40
RA40SCR	4p	New blue, screened value	26.7.88 10.10.89 27.11.90	cyl 15 RD 15p coil CS16 RD 17p coil CS18 cyl 15 (horiz pair)	0.30 £1500
		RA40SCR/IMP Imperforate			
RA41SCR	4p	New blue, screened value, thinner paper	?11.90	RD 15p coil CS17	3.00
RA42SCR	4p	New blue, ACPD, screened value	?10.91	cyl 15	0.60
RA50	5p	Claret, solid background	26.7.88 27.11.90 1.10.91	cyl 10 RD 17p coil CS18 RD 18p coil CS19 cyl 10 (horiz pair)	0.30 £2500
		RA50IMP Imperforate			
RA50SCR	5p	Claret, solid background, screened value	26.7.88	cyl 10	0.80
RA60	6p	Olive-yellow	10.9.91	cyl 11	0.35
RA100	10p	Orange	4.9.90	cyl 21	0.35
RA170	17p	Slate-blue	19.6.84 4.9.84 8.1.85 18.3.86	cylls 7, 10, 11, 13, 15 Heritage pane DP72 Times panes DP77, 80 Brit Rail panes DP86, 89 cyl 13 (hor or vert pr)	0.60 250.00
		RA170IMP Imperforate			
RA171	17p	Slate-blue, translucent paper	4.9.84	Heritage pane DP72	40.00

<i>CC</i>	<i>Value</i>		<i>First Issued</i>	<i>Source</i>	<i>Price</i>
<b>RA180</b>	<b>18p</b>	Grey-green	28.8.84	cyls 4, 5	0.65
			3.3.87	P & O pane DP96	
			14.4.87	£1.80 panes DP92D/E	
			4.8.87	72p Window pane DP102	
			4.8.87	£1.80 Window pane DP103	
			29.9.87	£1.80 panes DP92F/G	
			3.5.88*	vert coil C36	
				* P.O. date but known 2.88.	
<b>RA180SCR</b>	<b>18p</b>	Grey-green, screened value	28.8.84	cyl 4	15.00
		RA180IMP Imperforate		cyl 4 Dot (hor or vert pair)	80.00
<b>RA190</b>	<b>19p</b>	Orange-red	23.8.88	cyls 1, 2, 3	0.50
			23.8.88	76p Window pane DP111	
			23.8.88	£1.90 Window pane DP112	
			5.9.88	£1.90 panes DP115/A	
			5.9.88	vert coil C37	
		RA190IMP Imperforate		cyl – (hor or vert pr)	500.00
<b>RA190SET</b>	<b>19p</b>	Orange-red, s/e top, comb perfs (Chambon)	11.10.88	76p Window pane DP111A	1.00
			11.10.88	£1.90 Window pane DP112A cyl B12 & B17	
			24.1.89	76p Window pane DP111B	
<b>RA190SEB</b>	<b>19p</b>	Orange-red s/e bottom, comb perfs (Chambon)	11.10.88	76p Window pane DP111A	1.00
			11.10.88	£1.90 Window pane DP112A cyl B12 & B17	
			24.1.89	76p Window pane DP111B	
<b>RA190SRT</b>	<b>19p</b>	Orange-red, s/e right & top	24.1.89	76p Window pane DP111A	8.00
<b>RA190SRB</b>	<b>19p</b>	Orange-red, s/e right & bottom	24.1.89	76p Window pane DP111A	8.00
<b>RA191</b>	<b>19p</b>	Orange-red, ACPD (resembling PCP1)	23.8.88	cyls 1, 2	1.30
<b>RA191A</b>	<b>19p</b>	Orange-red, ACPD (resembling PCP2)	23.8.88	£1.90 Window pane DP112A	1.50
<b>RA192SET</b>	<b>19p</b>	Orange-red, s/e top, rotary perfs, value set nearer left (Jumelle)	26.6.89	£1.90 Window pane DP112B cyl B19 (APS)	2.50
<b>RA192SEB</b>	<b>19p</b>	Orange-red, s/e bottom rotary perfs, value set nearer left (Jumelle)	26.6.89	£1.90 Window pane DP112B cyl B19 (APS)	2.50
<b>RA193SET</b>	<b>19p</b>	Orange-red, s/e top rotary perfs (Chambon)	11.10.88	76p Window pane DP111A	6.00
			11.10.88	£1.90 Window pane DP112A cyl B12	
<b>RA193SEB</b>	<b>19p</b>	Orange-red, s/e bottom rotary perfs (Chambon)	11.10.88	76p Window pane DP111A	6.00
			11.10.88	£1.90 Window pane DP112A cyl B12	
<b>RA200</b>	<b>20p</b>	Sea-green	23.8.88	cyl 11	0.45
			12.90	cyl 12 (reissue)	

### 3 : Redrawn Numerals ACP/DEX

<i>CC</i>	<i>Value</i>		<i>First Issued</i>	<i>Source</i>	<i>Price</i>
<b>RA201</b>	<b>20p</b>	Black	26.9.89 16.10.89 16.10.89	cyl 12 horiz coil C38 vert coil C39	0.45
		RA201IMP Imperforate		cyl 12 (hor or vert pr)	650.00
<b>RA201SCR</b>	<b>20p</b>	Black, screened value	26.9.89 16.10.89	cyl 12 No Dot horiz coil C38	5.00
<b>RA202</b>	<b>20p</b>	Black, ACPD	?1.90	cyl 12	1.40
<b>RA202SCR</b>	<b>20p</b>	Black, ACPD, screened value	?1.90	cyl 12 No Dot	15.00
<b>RA203SEL</b>	<b>20p</b>	Black, s/e left	2.10.89	£1 pane DP133	1.30
<b>RA203SEL/SCR</b>	<b>20p</b>	Black, s/e left, screened value	15.12.89	£1 pane DP133 cyl B9	3.50
<b>RA203SER</b>	<b>20p</b>	Black, s/e right	2.10.89	£1 pane DP133	1.20
<b>RA203SER/SCR</b>	<b>20p</b>	Black, s/e right, screened value	15.12.89	£1 pane DP133 cyl B9	3.50
<b>RA220</b>	<b>22p</b>	Yellow-green RA220IMP Imperforate	28.8.84	cyl 6 cyl 6 (horiz pair)	0.60 £1000
<b>RA220SCR</b>	<b>22p</b>	Yellow-green, screened value	5.87	cyl 10	1.40
<b>RA221</b>	<b>22p</b>	Orange-red	4.9.90 17.9.90	cyl 10 vert coil C40	1.00
<b>RA221SCR</b>	<b>22p</b>	Orange-red, screened value RA221SCR/IMP Imperforate	4.9.90	cyls 10, 11 (part of sheet) cyl 10 (hor or vert pr)	1.75 600.00
<b>RA222</b>	<b>22p</b>	Orange-red, ACPD,	?12.90	cyls 10, 11	4.00
<b>RA222SCR</b>	<b>22p</b>	Orange-red, ACPD, screened value	?12.90	cyls 10, 11	7.50
<b>RA230</b>	<b>23p</b>	Bright green	23.8.88	cyl 6	0.85
<b>RA240</b>	<b>24p</b>	Violet	6.88	cyl 2 (part of sheet)	1.40
<b>RA240SCR</b>	<b>24p</b>	Violet, screened value	28.8.84	cyls 1, 2	2.50
<b>RA241</b>	<b>24p</b>	Indian red RA241IMP Imperforate	26.9.89	cyl 2 cyl 2 (hor or vert pr)	1.50 £2250
<b>RA241SCR</b>	<b>24p</b>	Indian red, screened value	26.9.89	cyl 2 (part of sheet)	10.00
<b>RA242</b>	<b>24p</b>	Red-brown	10.9.91 10.9.91 16.9.91	50p pane DP173/B cyl 1 vert coil C41	0.55
<b>RA242SCR</b>	<b>24p</b>	Red-brown, screened value RA242SCR/IMP Imperforate	10.9.91	cyl 1 cyl 1 (hor or vert pr)	2.50 450.00
<b>RA242SEL</b>	<b>24p</b>	Red-brown, s/e left	10.9.91	£1 pane DP174	0.80
<b>RA242SER</b>	<b>24p</b>	Red-brown, s/e right	10.9.91	£1 pane DP174	0.80
<b>RA243SCR</b>	<b>24p</b>	Red-brown, ACPD, screened value	?1993	cyl 1	2.00

<i>CC</i>	<i>Value</i>		<i>First Issued</i>	<i>Source</i>	<i>Price</i>
<b>RA244SCR 24p</b>	Red-brown, screened value, translucent paper		1991	cyl 1	4.00
<b>RA245SEL 24p</b>	Bright red-brown, s/e left		22.9.92	£1 pane DP174	4.00
<b>RA245SER 24p</b>	Bright red-brown, s/e right		22.9.92	£1 pane DP174	4.00
<b>RA260 26p</b>	Red		4.8.87	£1.04 Window pane DP104	4.50
<b>RA260SCR 26p</b>	Red, screened value		4.8.87	£1.04 Window pane DP104	7.50
<b>RA261 26p</b>	Drab		4.9.90	cyl 4	0.80
<b>RA270 27p</b>	Red-brown		23.8.88	£1.08 Window pane DP113	1.25
			23.8.88	cyl 1	
<b>RA270SCR 27p</b>	Red-brown, screened value		23.8.88	cyl 1 (part traces of screening)	5.00
<b>RA270SET 27p</b>	Red-brown, s/e top		11.10.88	£1.08 Window pane DP113A	4.25
<b>RA270SEB 27p</b>	Red-brown, s/e bottom		11.10.88	£1.08 Window pane DP113A	4.25
<b>RA271 27p</b>	Violet		4.9.90	cyl 1	1.25
<b>RA280 28p</b>	Deep violet		7.10.86	cyl 1	1.10
<b>RA281 28p</b>	Ochre		23.8.88	cyl 4	1.25
<b>RA282 28p</b>	Slate-blue RA282IMP	Imperforate	10.9.91	cyl 4 cyl 4 (hor pair)	1.10 £1750
<b>RA290 29p</b>	Reddish violet		26.9.89	cyl 4	1.50
<b>RA300 30p</b>	Grey-green		26.9.89	cyl 2	2.75
<b>RA300SCR 30p</b>	Grey-green, screened value		26.9.89	cyl 2 No Dot (part)	1.50
<b>RA310 31p</b>	Purple RA310IMP	Imperforate	17.9.85	cyl 2 cyl 2 No Dot (hor or vert pair)	1.10 £1200
<b>RA311 31p</b>	Ultramarine		4.9.90	cyl 8	1.30
<b>RA320 32p</b>	Greenish blue		23.8.88	cyl 1	7.50
<b>RA320SCR 32p</b>	Greenish blue, screened value RA320SCR/IMP	Imperforate	23.8.88	cyl 1 cyl 1 (hor or vert pr)	1.50 £1500
<b>RA330 33p</b>	Light emerald		4.9.90	cyl 1	1.40
<b>RA331 33p</b>	Pale emerald		11.2.92	vert coil C50	1.75
<b>RA340SCR 34p</b>	Olive-sepia, screened value		24.6.86	cyl 2	1.40
<b>RA341SCR 34p</b>	Slate-blue, screened value		26.9.89	cyl 2	1.75
<b>RA342SCR 34p</b>	Reddish violet, screened value		10.9.91	cyl 2	1.50
<b>RA350 35p</b>	Sepia		23.8.88	cyl 1	10.00
<b>RA350SCR 35p</b>	Sepia, screened value RA350SCR/IMP	Imperforate	23.8.88	cyl 1 cyl 1 (hor or vert pr)	1.50 £1700

**3 : Redrawn Numerals ACP/DEX**

<i>CC</i>	<i>Value</i>		<i>First Issued</i>	<i>Source</i>	<i>Price</i>
<b>RA351</b>	<b>35p</b>	Yellow	10.9.91	cyl 1	0.95
<b>RA352</b>	<b>35p</b>	Deep yellow	6.92	cyl 1 (warrant 791)	1.25
<b>RA370</b>	<b>37p</b>	Bright rose-red	26.9.89	cyl 2	2.00
<b>RA370SCR</b>	<b>37p</b>	Bright rose-red, screened value	26.9.89	cyl 2	2.00
<b>RA390</b>	<b>39p</b>	Bright mauve	10.9.91 11.2.92	cyl 2, 3, 4 vert coil C54	1.75
<b>RA390SCR</b>	<b>39p</b>	Bright mauve, screened value	10.9.91	cyl 2	2.00
<b>RA500</b>	<b>50p</b>	Ochre RA500IMP	21.1.92	cyl 36 cyl 36 (hor or vert pair)	1.40 £1500

**e) Non-phosphor paper**

<b>RN500</b>	<b>50p</b>	Ochre	13.3.90	cyl 35	1.50
<b>RN501</b>	<b>50p</b>	Deep yellow-ochre	10.90	cyl 36	2.25
<b>RN750*</b>	<b>75p</b>	Grey-black	26.7.88	cyl 1	2.50
<b>RN750SCR</b>	<b>75p</b>	Grey-black, screened value	26.7.88	cyl 1	4.00

*\*Note: previously numbered RF750*